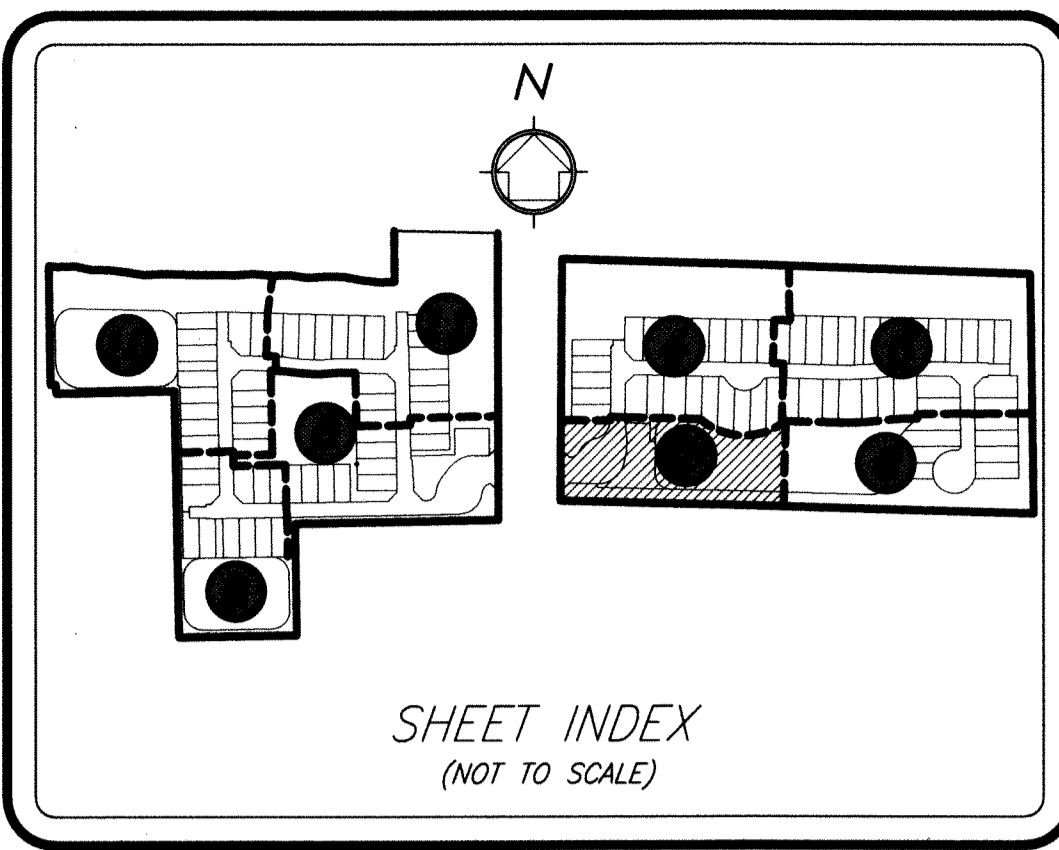


# POINTE OF WOODS P.U.D.

BEING A REPLAT OF PORTIONS OF TRACT 1 AND TRACT 2, BLOCK 13, AND TRACT 75 AND TRACT 76, BLOCK 5, PALM BEACH FARMS COMPANY PLAT NO. 3, RECORDED IN PLAT BOOK 2, PAGES 45 THROUGH 54, OF THE PALM BEACH COUNTY PUBLIC RECORDS, TOGETHER WITH A PORTION OF THE NE 1/4 SECTION 3, TOWNSHIP 44 SOUTH, RANGE 42 EAST, SAID LANDS LYING AND SITUATE IN SECTION 3, TOWNSHIP 44 SOUTH, RANGE 42 EAST, PALM BEACH COUNTY, FLORIDA.

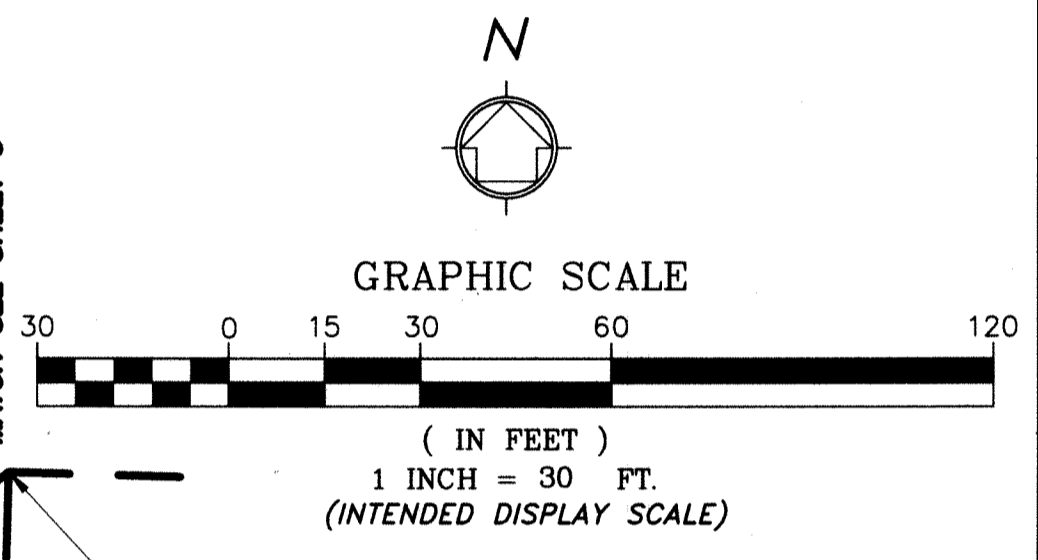
60

SHEET 7 OF 12 SHEETS



SHEET INDEX  
(NOT TO SCALE)

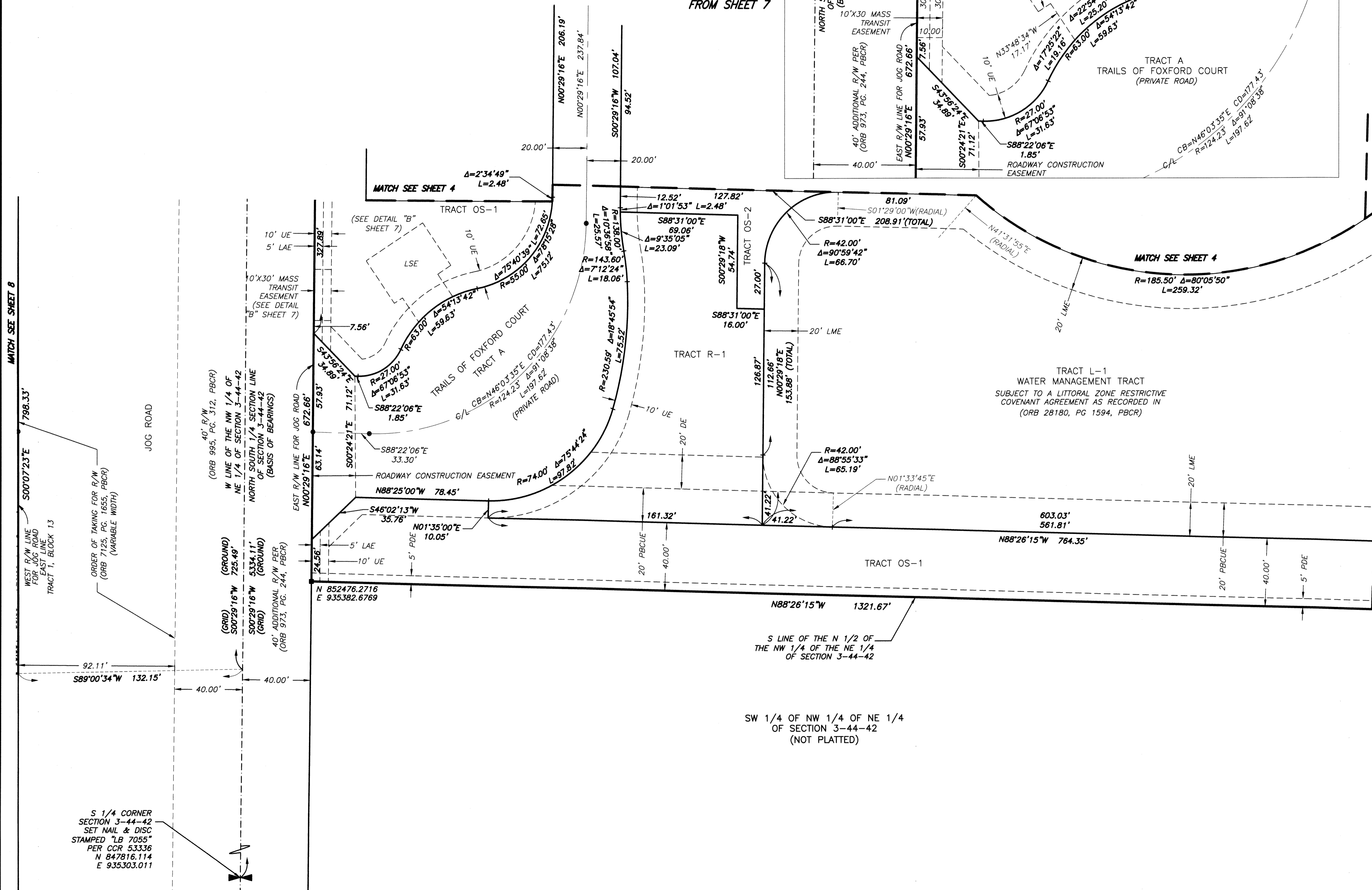
SCALE: 1" = 20'  
(INTENDED DISPLAY SCALE)  
DETAIL "B"  
FROM SHEET 7



- LEGEND:**
- AC = ACRES
  - CB = CHORD BEARING
  - CD = CHORD DISTANCE
  - C/L = CENTER LINE
  - CCR = CERTIFIED CORNER RECORD
  - CONC. = CONCRETE
  - DE = DRAINAGE EASEMENT
  - FND. = FOUND
  - FDOT = FLORIDA DEPARTMENT OF TRANSPORTATION
  - FPLE = FLORIDA POWER & LIGHT EASEMENT
  - LB = LICENSED BUSINESS
  - LME = LAKE MAINTENANCE EASEMENT
  - LMAE = LAKE MAINTENANCE ACCESS EASEMENT
  - LSE = LAKE MAINTENANCE EASEMENT
  - LSE = LIFT STATION EASEMENT
  - ORB = OFFICIAL RECORDS BOOK
  - PG. = PAGE
  - PDE = PUBLIC DRAINAGE EASEMENT
  - PBCR = PALM BEACH COUNTY RECORDS
  - PBCUE = PALM BEACH COUNTY UTILITY EASEMENT
  - PB = PLAT BOOK
  - = PERMANENT CONTROL POINT (PCP), SET NAIL & BRASS DISC STAMPED "LB 7055"
  - PRM = PERMANENT REFERENCE MONUMENT
  - (R) = RADIAL
  - ROE = ROOF OVERHANG EASEMENT
  - R/W = RIGHT-OF-WAY
  - SFWM = SOUTH FLORIDA WATER MANAGEMENT DISTRICT
  - (TYP.) = TYPICAL
  - UE = UTILITY EASEMENT
  - = SET 4"x4" CONCRETE PRM & ALUMINUM DISC STAMPED "LB 7055 PRM" UNLESS OTHERWISE NOTED
  - ① = SHEET NUMBER

SECTION 3-44-42 = SECTION 3,  
TOWNSHIP 44 SOUTH, RANGE 42 EAST

**NOTE:**  
COORDINATES SHOWN ARE GRID COORDINATES  
DATUM = NAD 83 (1990 ADJUSTMENT)  
ZONE = FLORIDA EAST ZONE  
LINEAR UNIT = U.S. SURVEY FEET  
COORDINATE SYSTEM = 1983 STATE PLANE  
TRANSVERSE MERCATOR PROJECTION  
ALL DISTANCES ARE GROUND  
SCALE FACTOR = 1.000030541  
PLAT BEARING = GRID BEARING  
GROUND DISTANCE X SCALE FACTOR = GRID DISTANCE



S 1/4 CORNER  
SECTION 3-44-42  
SET NAIL & DISC  
STAMPED "LB 7055"  
PER CCR 53336  
N 847816.114  
E 935303.011

**WGI**  
2035 Vista Parkway, West Palm Beach, FL 33411  
Phone No. 866.909.2220 www.wginc.com  
Cert No. 6091 - LB No. 7055  
THIS INSTRUMENT WAS PREPARED BY ERIC R. MATTHEWS, P.S.M.  
PROFESSIONAL SURVEYOR AND MAPPER, LICENSE NO. 6717  
FOR THE FIRM: WANTMAN GROUP, INC.